



Helping those in crisis by collaborating with the community to offer programs and services that transform lives through the love of Christ.

2007 Newsletter—Fall / Winter Edition

Christmas Toy Drive 2007

Reach out and make the upcoming Christmas brighter for one of your neighbors in Norcross!



Join us as we share the joy of Christmas with the children in our community. Each year NCM helps provide Christmas gifts to over 3,000 children and teens. Register today to help families in need. Sign-up via our website or call the office at: 770-263-0013 For more details and a list of suggested gift items, visit our website at: www.norcrossco-op.org.

**Deliver new unwrapped toys
to the Norcross Co-op now
through December 15th!**

THE NORCROSS COOPERATIVE
MINISTRY INC.

2275 Mitchell Road
Norcross, GA 30071

Phone: 770-263-0013

Fax: 770-263-0998

Email: christmas@norcrossco-op.org

Donation Hours:

Monday-Friday from 9 AM to 4 PM
Tuesday Evening from 6 PM to 8 PM
Saturdays from 10 AM to Noon

Toy Wish List:

- Baby Dolls & Barbie Dolls & Accessories (All Races)
 - Toy cars/ trucks
 - Action Figures
- Play Tool Sets/ Play Tea Sets
 - Lego's
 - Sports Balls
- Handheld Electronic Games, Walkmans and Wholesome CDs
- Books, Board Games & Puzzles (for kids and teens)
 - Educational Games
 - Remote Control Cars
 - Watches and Jewelry
- Perfume & Cologne Sets, Make-Up
 - Craft Sets/ Art Sets

Gift Cards Also Welcomed: Target, Wal-Mart, Kohl's, Best Buy, Publix or Kroger, etc. in \$20 denominations.



NCM's Stewardship Policy

Our responsibility is to be good stewards of the resources donated to NCM. To achieve that goal, we have policies and procedures in place to allow for smooth operation, fair distribution of limited resources, and the prevention of client fraud and abuse.

Distinguished Service Projects—Highlights



We wanted to take this opportunity to highlight some of the special service projects individuals and groups have done for the Co-Op this summer.

Assistance League — Recognized for their regular donations of clothing and personal care items.

Christ The King Pre-School - Recognized for their faithful dedication and ongoing fund raising and food drives over the years.

Infiniti of Gwinnett

Recognized for innovation in sponsoring school supply drives and for the tremendous response they got. All told they provided 1,500 book bags and school supplies county-wide to five agencies, including the Norcross Co-Op, which received 750 book bags.

Food Drive Sponsors

Agco
Christ the King Lutheran
Mt. Carmel UMC
Norcross Presbyterian Church
Peachtree Corners Church of Christ
St. James Lutheran

Campus Church of Christ
John Wesley UMC
Norcross 1st Baptist
Peachtree Corners Baptist
Peachtree Corners Presbyterian
Victory World Church

Christ Church Episcopal
John's Creek UMC
Norcross 1st UMC
Peachtree Corners Christian
Simpsonwood UMC

Group Service Projects

Boy Scouts Service Projects
Christ the King Lutheran
Dunwoody UMC VBS
Greater Atlanta Christian School Students
John's Creek UMC Youth
Marist School Students
Monarch School Students
Norcross High School Students
Norcross Presbyterian Youth
Peachtree Corners Christian Church VBS
Perimeter Christian School Students
Providence Christian School Students
Simpsonwood UMC Youth
Wesleyan Christian School Students

Checkfree Employee Day of Service
Ciba Vision Employee Service Project
Girl Scout Service Projects
John Wesley UMC Youth & Women
Latter Day Saints
Meadowcreek High School Students
Norcross 1st UMC—Dukes Class & Genesis Class
Norcross Presbyterian VBS
Peachtree Corners Baptist VBS
Peachtree Corners Church of Christ
Pleasant Hill Presbyterian Church
Simpsonwood UMC
Sugarloaf UMC

Peachtree Corners Christian Church

Peachtree Corners Christian Church brought “Vacation Bible School In-a-Box” to the Norcross Co-Op on Wednesdays in June and July. Realizing that many children who come to the Norcross Co-Op have little to nothing to do while their parents seek assistance, the church took the initiative to fill the gap.

The church came armed with love, boxes of crafts, art supplies, Bibles, story books, blankets, snacks and decorations and dedicated volunteers including: Bethanne Faulconer, Ginny Bozzone, Leah Faulconer, James McDowell, Pt Padrick, Grace Waring, Cameron Waring, Margaret Austin, and Pastor Kathy. Blankets were used to create a reading corner. Crafts and snacks were set up in the Co-Op's break room. Children, bubbles and chalk found themselves enjoying the outdoors. The children loved it—all of it! They loved being read to. They were overjoyed to be able to make a craft to take home. They especially liked the yummy snacks of homemade cookies, frosting and fresh fruit. They loved the attention and were pleased to have something special to do at NCM.

One of the church's volunteers has reported that this was the highlight of her summer. Another volunteer from a different church shared with Pastor Kathy that she had been on a mission trip to Mexico before, but working with the kids at NCM made her realize where she needs to be—right here in her own community! The church is looking forward to expanding its VBS In-a-Box next summer! NCM staff and volunteers report that many families were coming on Wednesdays in June and July and would sign in at the reception desk saying that they did not need or want anything, except to bring their child in for the VBS—wow! What a great testimony for the power of such outreach efforts. Thank you Peachtree Corners Christian Church. *Article by: Rev. Kathy McDowell, Pastor*

HOME Ministry (Helping Others Move Economically)

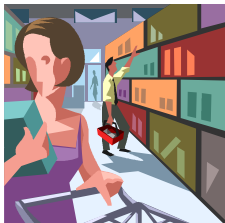


It may not surprise you that homelessness is on the rise in Gwinnett County. Last year alone there were more than 3,000 evictions and foreclosures. Many of those most affected by this traumatic disruption in their families' lives are the children. What may surprise you is that there is no shelter in Gwinnett County, an area which is part of the urban sprawl that is metropolitan Atlanta, GA. The Norcross Co-Op is blessed with an opportunity to be a bigger part of the solution to this ongoing problem by building on past programs to provide temporary lodging and rental assistance. In October 2007, the Norcross Co-Op will receive a \$52,280 grant from Gwinnett County to support an initiative to fight homelessness. The grant will enable us to launch a new program called "Helping Others Move Economically" or HOME. Through one of our newest transformation programs, the HOME program, we will help families secure shelter for up to four weeks with matching funds.

During that four weeks recipient families will work with a case manager at the Norcross Co-Op to: (1) register their children in school; (2) receive job search support; (3) participate in credit counseling sessions; (4) explore more permanent transitional housing opportunities; and (5) identify and connect with other community programs designed to help them become more financially stable. Because HOME is a matching funds program, it is important for us to demonstrate broad community support for this initiative.

Your donations to the HOME program will make an enormous impact on families determined to recover from a difficult situation. Please prayerfully consider partnering with us as we minister to families in need. If you wish to make a designated gift to NCM to support the HOME program, please write "HOME" in the memo field on your check. Visit our website for information about programs and services offered by NCM, and join us in this ministry to support our neighbors in Gwinnett County. Together we can make a difference in our community, "one family at a time".

Barnes & Noble Booksellers @ the Forum



**You are invited to the
NORCROSS CO-OP CHARITY
BOOK FAIR**

**November 18th thru November
26th**

The Norcross Cooperative Ministry (NCM) will benefit from the Book Fair at Barnes & Noble at the Forum. The Forum is located at 5141 Peachtree Parkway in Norcross. The contribution to NCM is determined by the total eligible purchases made by supporters of the Co-Op during that time. Print a book fair voucher off of the Norcross Co-Op's web site at www.norcrossco-op.org or request one from the cashier.

The money raised through this event supports NCM's ESOL classes, GED and summer school sponsorships, and helps us provide school supplies to many youth.

We encourage everyone to shop for holiday gifts and/or for selected items for use in one of NCM's educational programs. See "Shopping ideas...">>>>

We hope to see you there!

A Special Meet & Greet

**Will be held on
Sunday, November 18th, 2007
From 1:30PM to 2:30PM**

The staff and Board Members of NCM invite you to a time of fun and fellowship at Barnes & Noble. Come join us as we kick off the week of events.

We hope to see you there!

Shopping ideas...

Buy and donate to NCM any of the following materials:

- The Firefly Spanish-English Visual Dictionary
- Oxford Picture Dictionary
- Practical English (Books 1-3) by Tim Harris
- Spanish-English Bibles
- Any of the side-by-side ESOL books (volumes 1-4) by Stephen Molinsky and Bill Blass
- Any bilingual children's books or side-by-side teacher guides

Thank you!

Donation Opportunities

Donations of food, clothing and financial support are vital to NCM's ability to serve the growing needs of the community. We accept donations Monday through Friday from 9AM to 4PM and on Saturdays between 10AM and Noon. Donation receipts are available upon request.

Common Stocks... Donations can be made with the assistance of our Financial Advisor, Mr. Dan Kinney of *The Kinney Group*. You may contact Mr. Kinney at 770-449-9079.

Matching Funds Program... Ask your Human Resources Manager if your company offers a matching program for charitable giving. These programs multiply your donation to the Norcross Co-Op.

Financial Donations... can be made via credit card through NCM's website or via check mailed to our office.

Food... Please give non-perishable food items. Avoid glass containers.

Clothing... New or gently used clothing for men, women, children and newborns.

Other... New & gently used: (Linens, kitchen items, household items & baby items, recycled shopping bags (paper or plastic grocery & clothing bags) NCM is **unable** to accept donations of furniture, mattresses, computer equipment, TV's, stereos, etc.).

Contact Information

Administrative Office

Monday through Friday 9AM to 4PM

Shirley Cabe, Executive Director
The Norcross Cooperative Ministry, Inc.
The Greg Ellis Center
2275 Mitchell Road
Norcross, GA 30071

Mailing Address:

P.O. Box 1489
Norcross, GA 30091

Volunteer Opportunities

Volunteers and community-wide donations of time and talent in leadership areas, service as committee members in the new transformational programs and as leaders of food, toy or back-to-school supply drives and hosts for special events benefiting NCM are welcome and needed.

We encourage you to support the Norcross Co-Op in whatever manner the Spirit leads you. Volunteer opportunities abound; no experience necessary.

Client Assistance Volunteers:

Monday, Wednesday, Friday	10:00AM to 2PM
Tuesday	6:00PM to 8PM
Saturday	10:00AM to Noon

Warehouse / Office & Special Projects Volunteers:

Monday through Friday	9:00AM to 4PM
-----------------------	---------------

Marketing / Communications Team:

This is a newly formed team and we are looking for volunteers with marketing / public relations experience to help us formulate and carry out our marketing strategy.

Prayer Partners:

We need volunteers who will pray for the Norcross Co-Op as well as pray for the concerns of our clients. We have a prayer request box, and we could e-mail you the prayer concerns on a weekly basis.

Small Group Helpers:

Small Group volunteers are needed to assist with childcare during adult ESOL classes on Tuesdays from 11:30AM-1PM and Thursday evenings 7PM -8PM and during small group classes on Wednesday evenings from 5:30PM—7:00PM.

Job Ministry:

The Job Ministry team can use your help calling clients, researching job leads, and keeping the job information board up-to-date. Hours are flexible.

Food, School Supply and Toy Drive Sponsors:

NCM particularly needs businesses, organizations, and individuals who are willing to organize food, school supply and toy drives throughout the year.

For more information on the many volunteer opportunities available at the Norcross Co-Op, call Shirley or Leslie at 770-236-0013.